

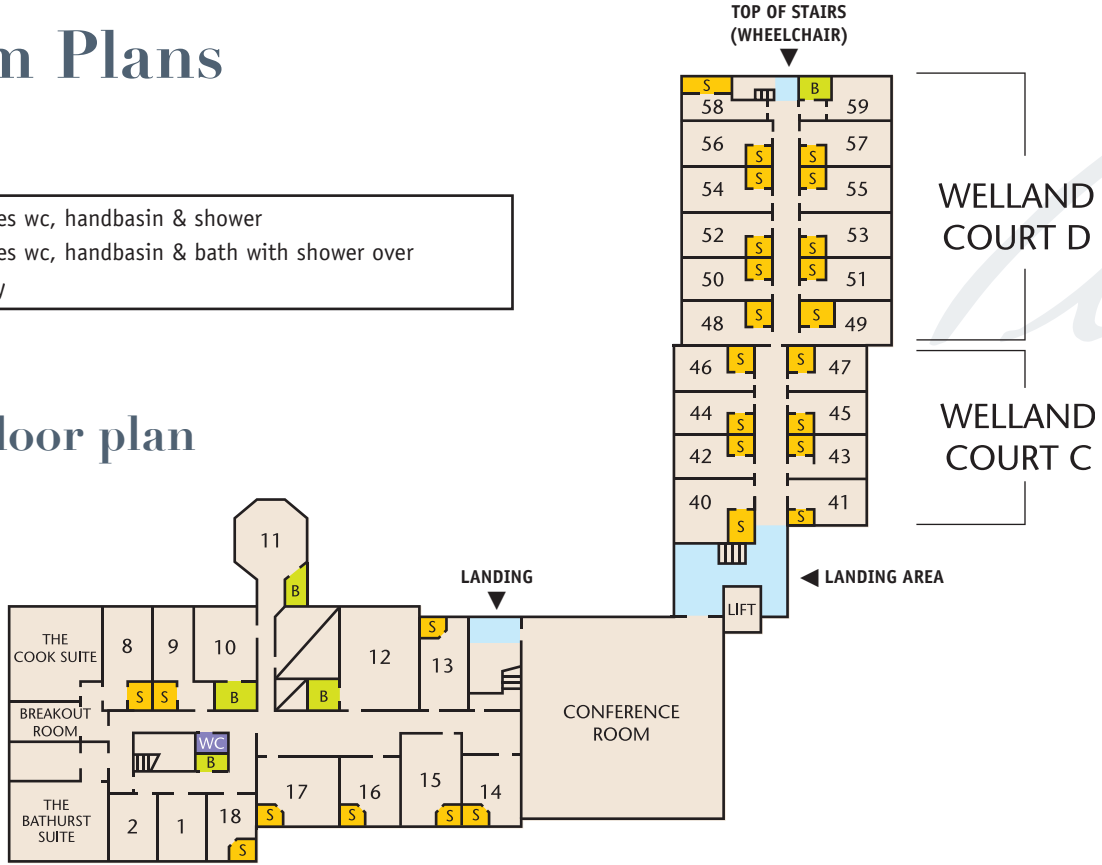


HOTHORPE HALL

Room Plans

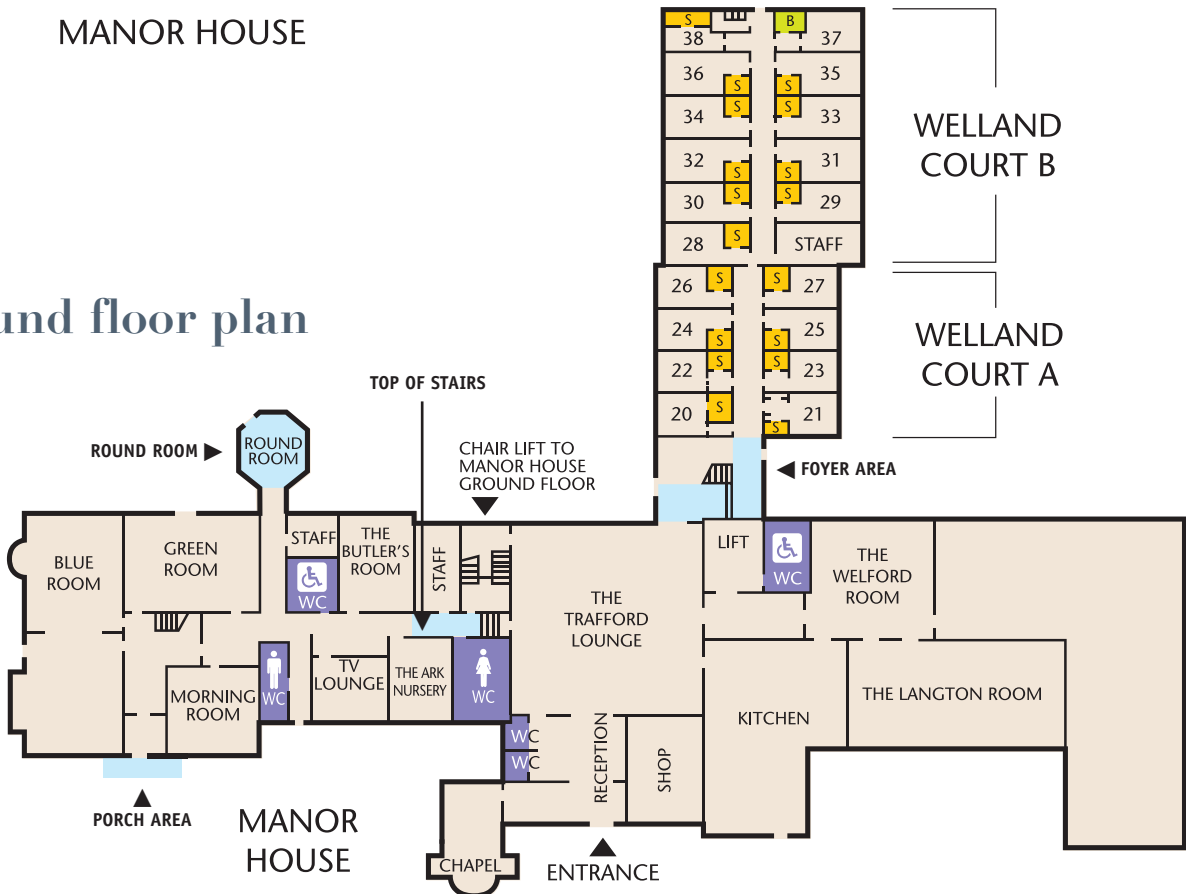
- S** indicates wc, handbasin & shower
- B** indicates wc, handbasin & bath with shower over
- WC** WC only

First floor plan



MANOR HOUSE

Ground floor plan



MANOR HOUSE



HOTHORPE HALL

Bed configuration for ground and first floor.

Block	Room	Beds	Room	Beds
MANOR HOUSE (First floor) En-suite rooms	1	1 Twin	8	1 Double or twin + 1 SS
	2	1 Double		9
	11	1 Double + 2 SS	10	1 Double or twin (bathroom)
	13	1 Twin + 2 SS	12	1 Double or twin + 3 SS (bathroom)
	15	1 Twin + 2 SS	14	1 Twin
	17	1 Double or twin + 1 Single + 1 SS	16	1 Twin
			18	1 Single + 1 SS
WELLAND COURT A (Ground floor) En-suite rooms	20	1 Twin	21	1 Double or twin
	22	1 Double or twin	23	1 Double or twin
	24	1 Double or twin	25	1 Double or twin
	26	1 Double or twin	27	1 Double or twin
WELLAND COURT B (Ground floor) En-suite rooms with bed settees	28	1 Double + 1 SS (has step)	29*	1 Double or twin + 2 SS
	30	1 Double + 1 SS (has step)	31*	1 Twin + 2 SS
	32	1 Twin	33*	1 Twin + 2 SS
	34	1 Twin	35	1 Double or twin + 2 SS
	36	1 Twin	37	1 Double + 1 SS (bathroom)
	38	1 Single (step into shower)		
WELLAND COURT C (First floor) En-suite rooms	40	1 Double + 1 Single	41	1 Double or twin
	42	1 Double or twin	43	1 Twin
	44	1 Twin	45	1 Twin
	46	1 Twin	47	1 Twin
WELLAND COURT D (First floor) En-suite rooms with bed settees	48	1 Double + 1 SS (has step)	49	1 Twin + 1 SS
	50	1 Double + 1 SS	51	1 Double or twin + 2 SS
	52	1 Twin	53	1 Twin + 2 SS
	54	1 Double or twin	55	1 Twin + 2 SS
	56	1 Twin	57	1 Twin + 2 SS
	58	1 Single (step into shower)	59	1 Double + 1 SS (bathroom)

SS = Single bed settee

WELLAND COURT BEDROOMS

* Have slightly more space, walk in showers, shower seats and hand rails.

SUMMARY

Wing of Accommodation	Number of Rooms	Standard bed spaces	Maximum bed spaces
MANOR HOUSE (First floor)	13	26	39
WELLAND COURT A (Ground floor)	8	16	16
WELLAND COURT B (Ground floor)	11	21	32
WELLAND COURT C (First floor)	8	17	17
WELLAND COURT D (First floor)	12	23	35
	<hr/> 52	<hr/> 103	<hr/> 139